



Mama Kuku Travel

Presents: Primarily Primates Safari

- Uganda 2023 -



Dates: ARRIVE January 14, 2023

DETAILED / SAFARI / TOUR ITINERARY:

Cost: \$ tbd + includes permits!

* note: depart the U.S. a day before anticipated arrival

Single Supplement: \$ tbd per person

Day 1: - Arrival Day is Saturday JAN 14, 2023- you must arrive in Entebbe on your own flight arrangements by the evening before the start of your safari. You will be picked up at the airport and transferred to a nearby Airport lodge for overnight.

All lodging subject to change depending upon availability.



Day 2: - To Murchison Falls National Park JAN 15, 2023 (Sunday)

Early morning after breakfast you will travel to Murchison Falls NP.

Via Masindi we have a long but interesting drive through the Ugandan countryside. But, we will stop at Ziwa Rhino Sanctuary for tracking the Rhinos and also have lunch here before continuing via Karuma Bridge to arrive later in the afternoon at Fort Murchison just outside the park boundaries. Here we will stay and enjoy a cool drink and a fabulous view over the river Nile as the evening comes to a close with all the sounds of an African night.

Driving time: \pm 7.5 hours

Accommodation: a lodge in/near Fort Murchison N.P; Murchison River Lodge, Pakuba, or similar

Day 3: - Murchison Falls National Park JAN 16, 2022 (Monday)

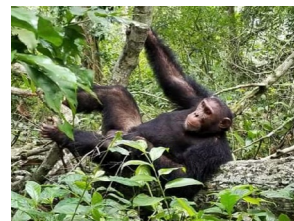
This day we start with a game drive that includes an impressive launch trip on the Nile River to the waterfalls. Hippos, crocodiles, buffalo, elephants and 450 different species of birds can be seen!! For the game drive we have to cross the Nile River, an adventure all by itself.

Some facts: Murchison Falls is the most Powerful Waterfall in the World!! Murchison Falls has been described as a marvel of nature unleashed, as the ground trembles with the power of the historic River Nile rushing toward the Mediterranean Sea. The Nile is 50 meters wide above the waterfalls and pours into and rushes through a 7 meter gorge called Devil's Cauldron, downward over 44 meters creating this awesome spectacular of Nature called Murchison Falls.

Accommodation: Murchison River Lodge, Pakuba, or similar

Day 4: - To Kibale Forest National Park JAN 17, 2022 (Tuesday)

After a hearty morning breakfast you will be picked up at the Lodge and leave for Kibale Forest National Park. After another scenic drive through the Ugandan countryside, we arrive in the afternoon. You can choose a leisurely rest of the day at our scenic lodge, or opt for a swamp walk in



Bigodi Swamp, where you may see several primate species, butterflies and a multitude of birds. Tonight, sleep well with the noises of the tropical rainforest, where the air is crisp and thin and clean, and the night sky dances with stars and constellations like seen nowhere else.

Driving time: \pm 6.5 hours

Accommodation: Isunga Lodge or similar

Day 5: - In Kibale Forest National Park JAN 18, 2023 (Wednesday)
Chimpanzee Walk in the morning, and an afternoon Community Walk in Bigodi. After breakfast your chimpanzee adventure begins. Your Chimpanzee permits will be awaiting you at the Ranger Station where you will be briefed and assigned to a guide to start an amazing chimp trek. After lunch, the afternoon is reserved for a tour of Bicowa, a community based project. Here you can see how coffee is harvested, baskets are woven, watch how banana juice is made by hand, and visit the local medicine man to learn about ancient healing.
Accommodation: Isunga Lodge or similar



Day 6: - To Queen Elizabeth NP JAN 19, 2023 (Thursday)



Early morning you will leave Kibale for Queen Elizabeth NP via Fortportal. You will reach Mweya around mid-day in Queen Elizabeth NP which has a stunningly beautiful view over the Kazinga Channel. In the late afternoon it is water safari time and for approximately two hours you will be treated to a launch trip on the Kazinga channel where birds and animals can be seen from the waterside. This is a highlight for those that love hippos and birds. Amazing!

Accommodation: Katara Lodge or Kasenyi Safari Camp or similar

Day 7: - To Bwindi Forest National Park JAN 20, 2023 (Friday)

After breakfast you will head towards the south of Uganda, passing the southern perimeter of the National Park. This part is called Ishasha sector and is famous for the tree-climbing lions.

Along the way you will stop for some animal viewing, making for an interesting drive. After a short game drive in this area you will continue towards Bwindi Impenetrable Forest. All the while driving through a verdant countryside, where you will pass traditional homesteads and enjoy panoramic views. In the afternoon we will arrive and stay close to the home of the endangered mountain gorillas. If we are lucky, the local school may pay us a visit for some song and dance.

Driving time: \pm 4.5 hours

Accommodation: Silverback Lodge; Mahogany Springs Lodge or similar



Day 8: - In Bwindi Forest National Park JAN 21, 2023 (Saturday)

The highlight of your safari: a meeting with the gentle giants of Bwindi! Especially hikers will love the tracking in the beautiful Buhoma or Rushaga sector ecosystem of the park. It is difficult to foresee how many hours you will hike; it may take two to eight hours on average. So, come prepared to walk a long distance in steep and sometimes muddy conditions, with possible rain overhead, before you encounter any gorillas. But it will definitely be worthwhile as you observe them closely while they eat, play and rest. A unique and unforgettable experience!

Accommodation: Silverback Lodge; Mahogany Springs Lodge or similar



Day 9: - JAN 22, 2023 - (Sunday) Today we have a leisurely breakfast and then start the journey back towards Entebbe. But, to break up the long drive, we stop near Lake Mburo overnight, where we can relax at about the midway point. Views of the lake make this a serene last night to enjoy the surrounding countryside. Driving time: \pm 4.0 hours
Accommodation: a lodge near Lake Mburo

Day 10: - JAN 23, 2022 - (Monday) Today we finish the drive back to Entebbe. We stop for a Tea/Coffee break/lunch at the equator and maybe buying souvenirs. A great place to shop for Ugandan souvenirs to take home to remind you of your adventure in this beautiful African country. You will be brought back to the airport where your journey began to continue on your flight back home. Or, maybe add on a safari in the Serengeti? Depending upon the time and if time permits, a stop at an airport Lodge may be made to relax a bit and refreshen ourselves before getting to the airport in Entebbe.

Driving time: \pm 4.5 hours

Accommodation: Your airline seat for your journey back to the U.S.

All flights must be booked as **late evening or night flights** out of Entebbe on the last day, or you must stay an additional night and book flights to depart for the next day.

ACTIVITIES INCLUDE:

- Boat rides(1 - Nile River, 1 -Kazinga Channel)
- Game drives (per itinerary, Murchison, Queen NP)
- Chimp Walk (1 chimp walk in Kibale Forest NP)
- Swamp Walk/Community walk (in Kibale NP area)
- Gorilla tracking (Bwindi Impenetrable Forest)



INCLUDED IN PRICE:

- Park entrances
- Guides in the Park
- Car (open roof, 4WD)
- Fuel
- English speaking Driver/guide
- Chimp Walk and permit
- Swamp Walk
- Game drives
- Boat Trip on the Nile, Kazinga Channel
- Bottled water in safari vehicle
- Accommodation mentioned or similar
- Breakfast, Lunch and Dinner
- Gorilla Permit (currently USD \$700+ per person)
- The first night Lodging upon arrival in Entebbe
- Transfers



NOT INCLUDED IN PRICES:

- Drinks, such as soft drinks and alcoholic beverages
- Water served at meals at Lodges may be an extra charge
- Porters
- Personal interests
- Tips to the guides, driver, servers
- Souvenirs
- Travel insurance, Medical and evacuation insurances.



* Additional tours either before or after this itinerary can be added. The most popular add-on tour is the Mabamba Swamp tour to see the shoebill bird. An amazing species to see while in Uganda.

NOTE ON INSURANCE:

Clients must obtain Travel Insurance with medical evacuation coverages. Cancel for any reason coverage is highly encouraged.

NOTE ON PACKING:

Clients are advised to pack lightly and in soft-sided backpacks or small luggage. All luggage must be placed into a safari vehicle and vehicles cannot accommodate large pieces and numerous pieces of luggage. A suggested packing list will be sent prior to departure for reference.

NOTE ON DIETARY REQUIREMENTS:

Please communicate all dietary restrictions and allergies prior to departure.

NOTE ON MONEY:

Uganda uses the Ugandan Shilling. Depending upon the time and market, the exchange rate is likely going to be about 3,000 to 3,500 Shillings to one U.S. Dollar. Some of the Lodges accept credit cards, although American Express was not accepted anywhere. The U.S. Dollar can be used in almost all places, but some local markets only had the ability to accept Shillings.

NOTE ON WEATHER:

You will be on the Equator, but do not ditch the jacket. Elevation causes cooler temperatures than one might expect. Plus, some of the areas are a rain forest, so being prepared for heat, cold, rain, and sun. A fleece jacket and a rain jacket is about perfect to combat all the elements, but also remember to bring sun screen, a hat and sunglasses too. A detailed packing list will be provided prior to departure with additional helpful information.

Please inquire sooner if you have any questions at this time.

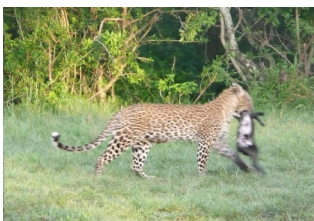
That's all for now!

Bon Voyage,

Mama Kuku



Mama Kuku hanging with the locals



Africa....

It should come with a disclaimer, as you will fall in love with it and it will literally touch your soul and draw you back, again and again.....

©

All photos are from Mama Kuku Travel adventures!!